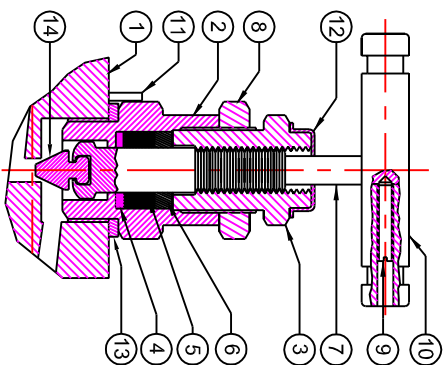


PROCESS SIDE
PLAN



S.NO.	DESCRIPTION	QTY.	MATERIAL
14	NON ROTATING VEE TIP	2	A564-630
13	WASHER	2	A479-316
12	DUST CAP	2	PLASTIC LD.
11	LOCK PIN	2	A479-316
10	HANDLE	2	A479-316
9	GRUB SCREW	2	STEEL
8	LOCK NUT	2	A479-316
7	SPINDLE	2	A479-316
6	PACKING WASHER	2	A479-316
5	PACKING	2	PTFE/GRAPFOIL
4	WASHER	2	A479-316
3	GLAND RETAINER	2	A479-316
2	BONNET	2	A479-316
1	BODY	1	A479-316

MATERIAL OF CONSTRUCTIONS

PANAM 3 VALVE MANIFOLD DESIGN FOR DIRECT MOUNTING, CONNECTING SYSTEM IMPULSE LINES & TRANSMITTERS, HAVING SIMPLE THREE VALVE CONFIGURATION WHICH ALLOWS FOR EASY BLOCK & CALIBRATION OF A DIFFERENTIAL PRESSURE TRANSMITTER.

FEATURES :

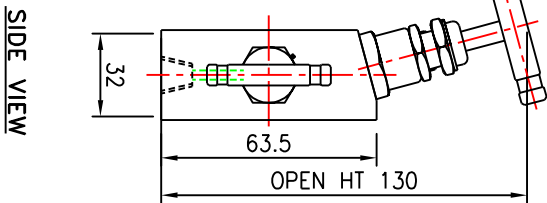
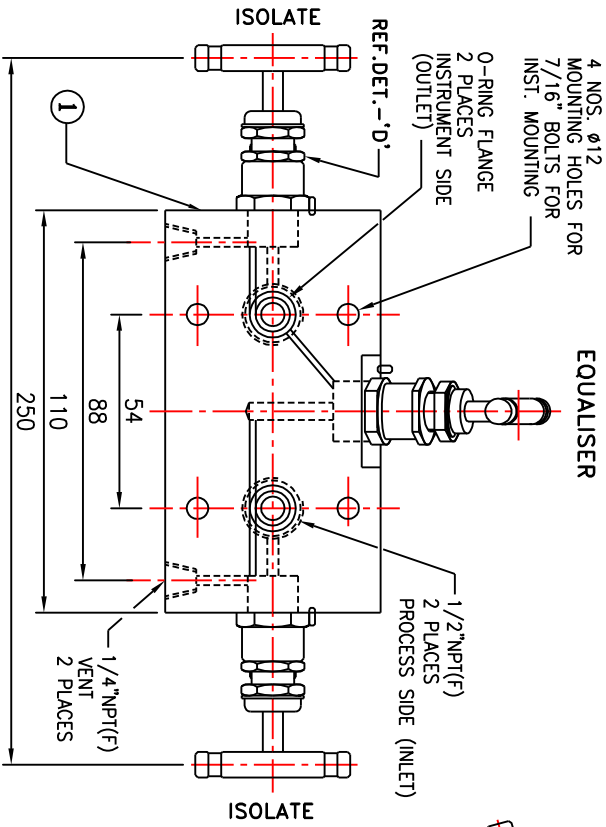
316 S.S. BODY CONSTRUCTION FOR SUPERIOR CORROSION RESISTANCE.
NON ROTATING VEE TIP PREVENTS GALLING & PROMOTES REPETITIVE SHUT-OFF.
OPTIONAL GRAPFOIL PACKING MATERIAL IS AVAILABLE FOR HIGH TEMP. RATING 1000°F @6000 PSI

TESTING:

PNEUMATIC TEST:- EACH VALVE IS TESTED WITH NITROGEN AT 100 PSI IN ACCORDANCE WITH MSS-SP-61 FOR SEAT & PACKING LEAKAGE.
HYDRO TEST:- PERFORMED WITH PURE WATER IN ACCORDANCE WITH MSS-SP-61. BODY TESTED AT 1.5 TIMES & SEAT LEAKAGE TESTED AT 1.1 TIMES OF THE WORKING PRESSURE.

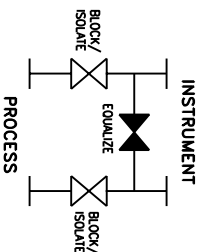
DESIGN STANDARD :

PRESSURE & TEMPERATURE RATING ARE SELECTED FROM ANSI B16.34 STANDARD CLASS VALVES BASED ON ANSI B16.34 CLASS 500 MR-01-75 OPTIONAL SOUR GAS SERVICE CONFIRMS TO NACE STD.



TECHNICAL DATA			
Seat	Pr. Rot.	Temp. Rot.	Cv
METAL SEAT	6000 PSI (41300 kpa)	PTFE (-20 to 250° F (-29° to 121°C)) GRAPFOIL (-20 to 600° F (-29° to 315°C))	0.52 max. 4.8 mm.

NOTE:-1) DIMENSIONS ARE IN MM.FOR REFERENCE ONLY,SUBJECT TO CHANGE.
2) APPROXIMATE WEIGHT= 2.1 KGS.



REV.	DESCRIPTION	BY	DATE

TITLE: - 3 VALVE MANIFOLD (PIPE TO FLANGE)
DIRECT MOUNT.

DRN.	VPT	SCALE - NTS.	
CHD.	VA	DATE - 28.01.2005	
APPD.	JP	DRG.NO.: 3WM-SS-8-DMA	RO



PANAM ENGINEERS
AN ISO 9001 : 2000 COMPANY
MUMBAI - INDIA